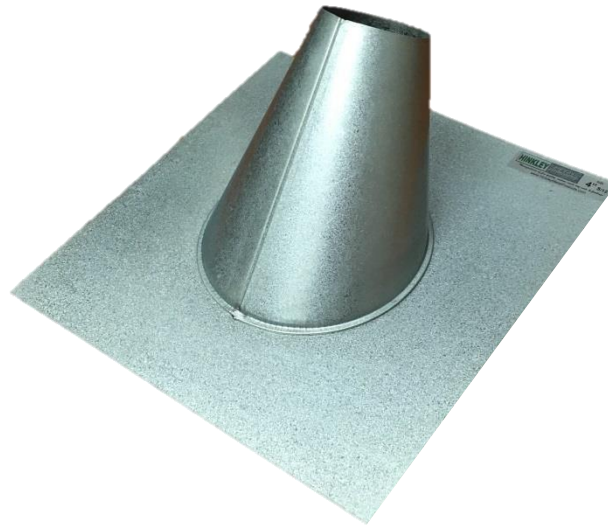


# SHORT CONE VENT

This Flange is, designed to be, used with a storm collar and vent cap.  
The double wall vent pipe extends through the flange and storm collar.

The storm collar skirts over the roof flange.

The vent cap is secured directly onto the top of the double wall vent pipe.



## TOP OPENING SIZE

3-1/2"

4-1/2"

5-1/2"

6-1/2"

## BOTTOM OPENING SIZE

8-1/4" to 11"

## STANDARD ROOF PITCH

FLAT THRU 12/12

## STANDARD MATERIAL:

Mill Finished Galvanized